



Chromebook Quick Start Guide

EACH KIT INCLUDES

Samsung Chromebook V2	\$297.00
Chromebook Charging Cord	\$15.00
Chromebook carrying case	\$20.00
Laminated Barcode Tag	\$5.00
Quick Start Guide	no fee

REPLACEMENT FEE

BORROWING INFO

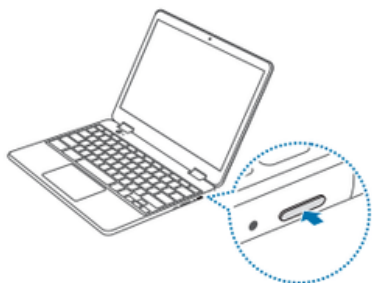
- 3 week checkout; no renewals
- Adult MLC (18+) cardholders only
- Pick up and return at RHML only

WHAT IS A CHROMEBOOK?

- Chromebooks are different from the average laptop; they are designed to work in the "cloud," using apps such as Google Drive, Docs, and Sheets.
- They require an active Internet connection to run, and don't allow software or documents to be saved to the computer itself.
- Our Chromebooks are touchscreen - meaning no mouse is provided.

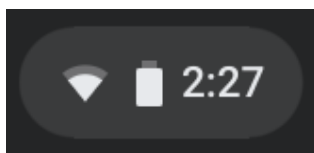
Power On

1. Make sure the computer is properly charged.
2. Open the screen
3. The computer automatically turns on when the screen is opened. If it does not turn on automatically, press the Power button.



Connect to Internet

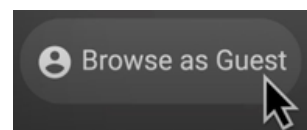
1. Select bar on the lower right corner that shows the time.



2. Select **No Network**, and then tap the **Wi-Fi** switch to activate. The Wi-Fi list will appear.
3. Select a network from the list of detected Wi-Fi list.
4. If the connection is successfully established, the network icon is displayed.

Log In

1. Login as a guest by clicking "Browse as Guest".

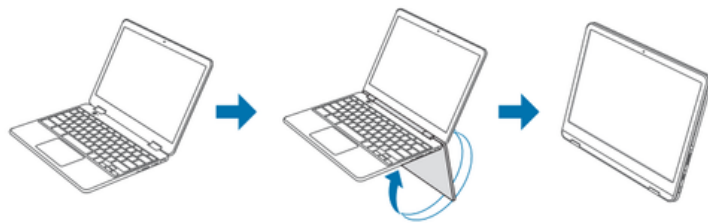


2. When your Chromebook starts for the first time, updates may be performed for up to 5 minutes during the activation step.

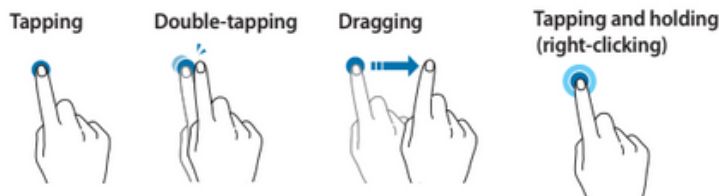
Chromebook Quick Start Guide

Tablet Mode

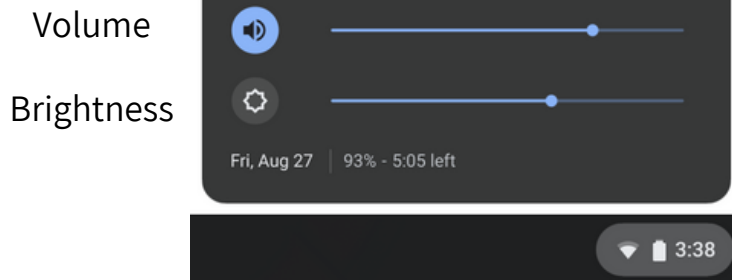
Our model of Chromebook can be used as a tablet as well! By folding the keyboard, the Chromebook will switch into tablet mode, turn off the keyboard and become fully touchscreen. All the same features are usable in tablet mode.



Common Touch Controls



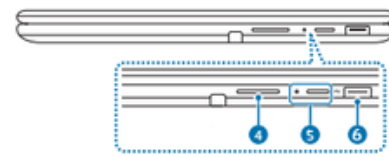
Adjusting Volume & Brightness



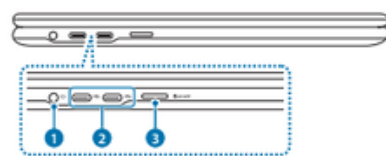
1. Press the tab on the bottom right of the screen.
2. A menu will show up. The bottom two bars control the volume and screen brightness.
3. Use the touchscreen or mouse to change the volume or brightness. Left will decrease, and right will increase intensity.

Ports

Right view



Left view



1. Headphone Jack
2. USB-C ports
3. MicroSD card slot
4. Volume button
5. Power button & LED
6. USB port

Additional Help

Chromebook Help Center

<https://support.google.com/chromebook#topic=3399709>



RHML Technology Page

<https://www.richmondheightslibrary.org/technologyto/>